

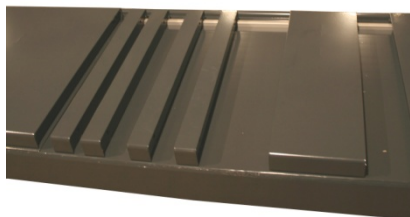
Stenhøj Major 430W (BMW approved)

Stenhøj Major 430W (BMW approved)

4-post electro-hydraulic lifts

The STENHØJ Major 430W lifts are especially suitable for wheel alignment, service and inspection, repair of brakes, wheels, exhaust system, shock absorbers, transmission and differential.

This wheel alignment lift fulfils the special BMW requirements with regard to maximum permissible difference in platform height during wheel alignment (± 0.5 mm right/left and ± 1 mm front/back/diagonally). The lift also fulfils the demands regarding stiffness, dimensions and the min./max. lifting height.




STENHØJ
lifting the level

The platforms are equipped with fixed as well as movable cover plates for turntables (not inclusive in the delivery).

Major 430W is delivered as standard with 900 mm ramps. As optional extras we offer 1600 mm ramps.

